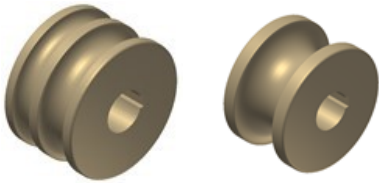


### ► Set of treated steel rollers

Set of 3 sets of treated steel rollers for steel round pipe or stainless Steel.

#### For pipe

| in mm   | ISO mm      | Whitwort inches                           |
|---------|-------------|-------------------------------------------|
| (25+30) | (17,2+21,3) | $(1/2''+1''1/4'')$ = (12,700 + 31,751 mm) |
| (20+35) | (33,7+26,9) | $(1''+3/4'')$ = (25,401 + 19,051 mm)      |
| 40      | 42,4        | 1''1/2 = 38,101 mm                        |
| 50      | 48,3        | 2'' = 50,802 mm                           |
| 60      | 60,3        | 2''1/2 = 63,502 mm                        |



1" WHITWORT = 25,401mm

Weight: From 6 to 13 Kg

When pipe sizes are small, two sizes are included in the same roller.

Eg. (25+30) or (1/2"+1"1/4")

It is advisable to clean up very well the rollers before using stainless Steel to prevent from contaminating the pipe.

### ► Set of Sustarín rollers

Set of 3 Sustarin rollers for stainless steel pipes, aluminium and delicate materials for thickness smaller than 2.5 mm.

#### For pipe in mm

(25+30) - (20+35) - 33 - 40 - 43 - 50 - 50,8 - 60



1" WHITWORT = 25,401mm

Weight: 2,5 Kg

When pipe sizes are smaller, two sizes are included in the same roller.

Eg. (25+30) or (1/2"+1"1/4")

Sustarin rollers do not spoil or contaminate the pipe.

**For any other size or profile please ask the manufacturer.**